

***Drosophila (Sophophora) suzukii* (Matsumura, 1931)**

Diagnosis. Male wing with spot pigmentation around apical portion of R_{2+3} vein; male, fore tarsomere I with sex comb in single transverse row at distal end; hypogynial valve pointed apically, as broader as hypoproct in lateral view.



Male habitus



Male fore tarsus



Peripheral organs



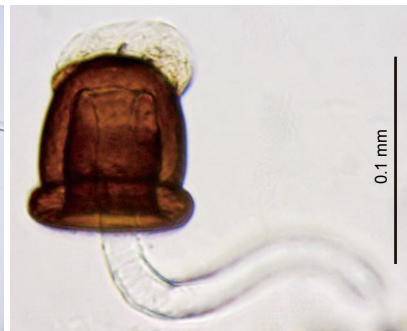
Phallic organs (lateral view)



Female habitus



Female terminalia



Spermatheca