

***Drosophila (Sophophora) subpulchrella* Takamori & Watabe in Takamori *et al.*, 2006**

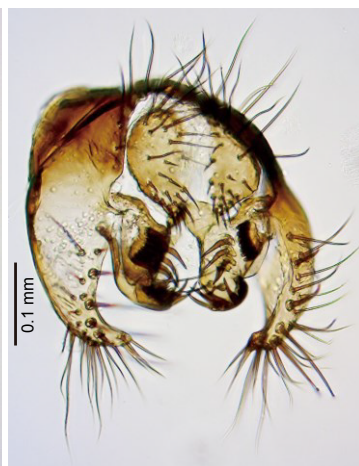
Diagnosis. Male wing with spot pigmentation around apical portion of R_{2+3} vein; male, fore tarsomere I with sex comb in 2 transverse rows on distal portion; hypogynial valve pointed apically, broader than hypoproct in lateral view.



Male habitus



Male fore tarsus



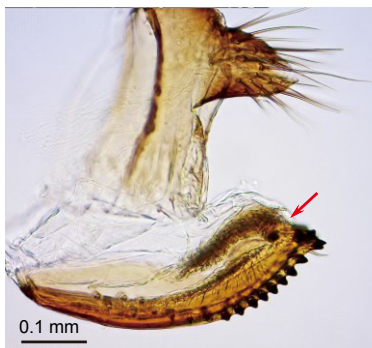
Peripheral organs



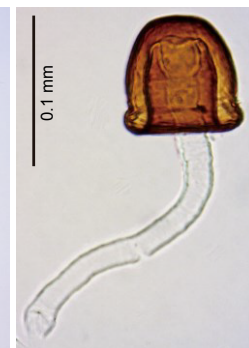
Phallic organs (lateral view)



Female habitus



Female terminalia



Spermatheca