

***Drosophila (Drosophila) immigrans* Sturtevant, 1921**

Diagnosis. Fore femur with a row of small spicules on inner surface (the *immigrans* group); R_{2+3} , R_{4+5} and M_1 veins apically slightly thickened or fuscous.



Male habitus



Male fore leg



Female habitus



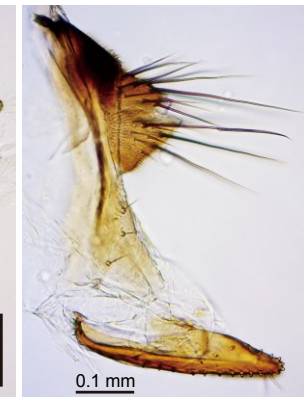
Spermatheca



Periphallallic organs



Phallic organs (ventral and ventrolateral views)



Female terminalia